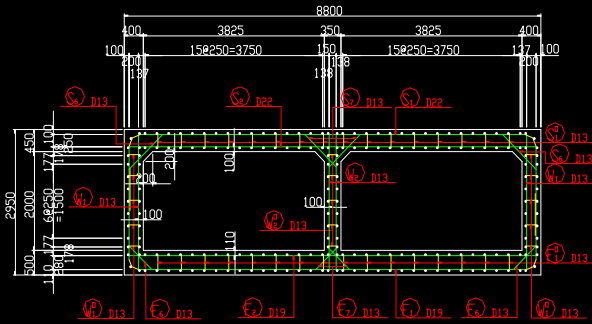
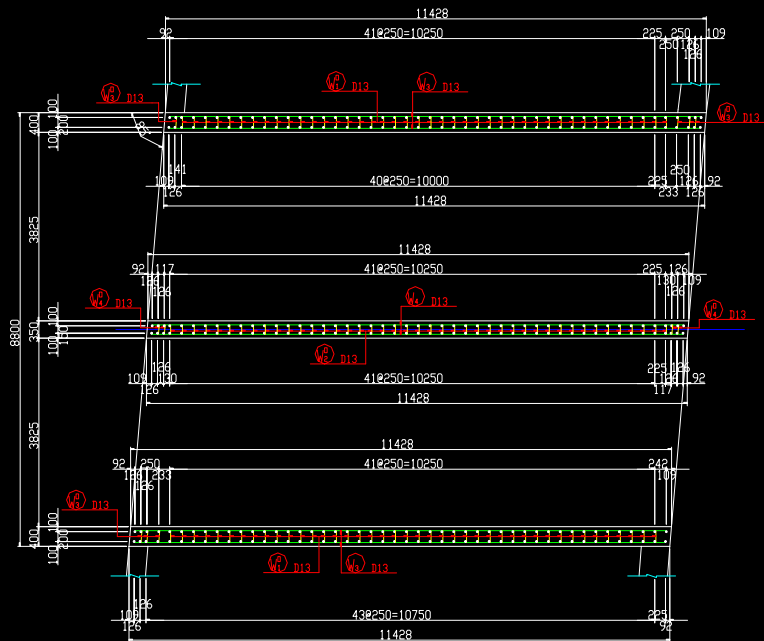


函渠工配筋图(1) s=1:50  
[面体部]

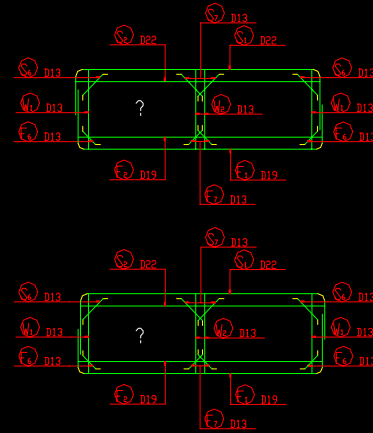
断面图  
(1-1)



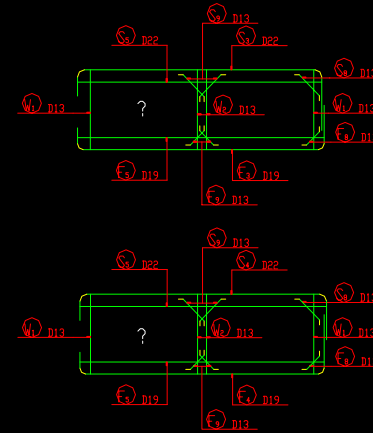
断面图  
(2-2)



主鉄筋組立图  
(標準部)  
ctc250

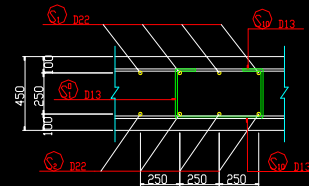


主鉄筋組立图  
(斜角部)  
ctc250

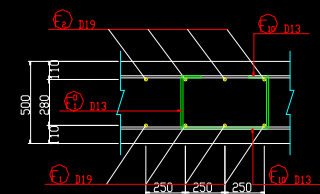


組立图  
S=1:15

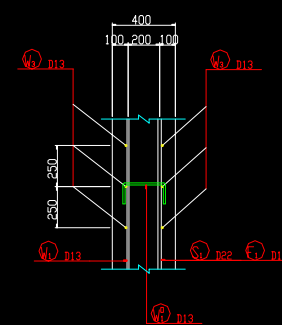
頂版部



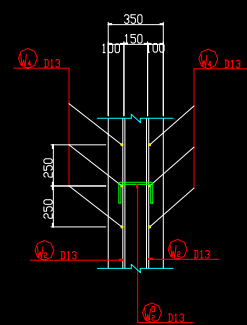
底板部



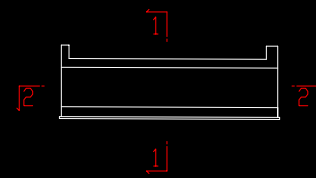
側壁部



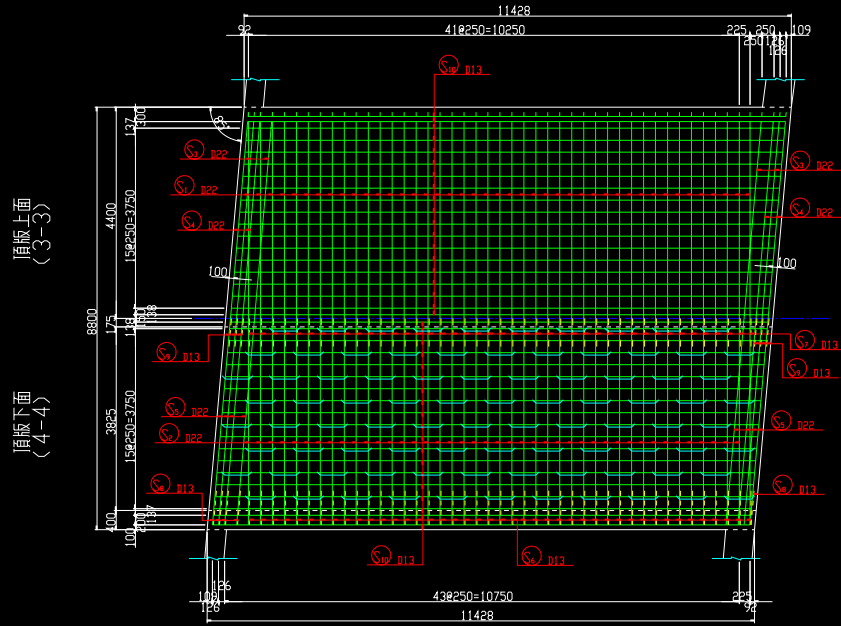
隔壁部



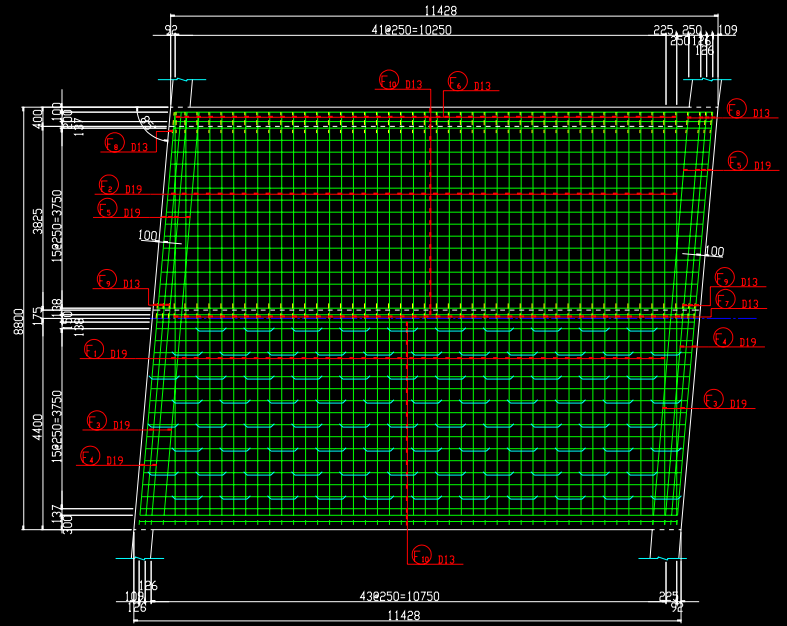
位置图



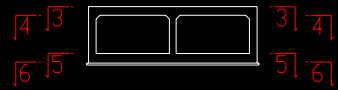
函渠工配筋图(2) S=1:50  
[面体部]



底板上面 (5-5)  
底板下面 (6-6)

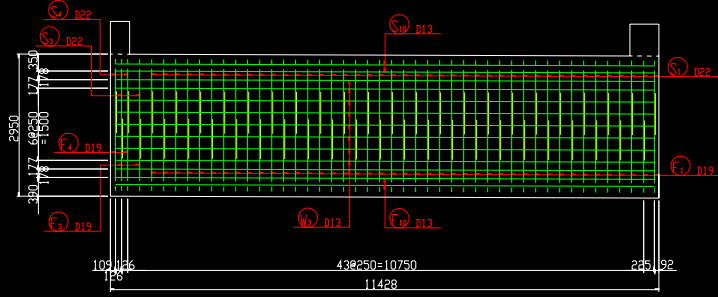


位置图

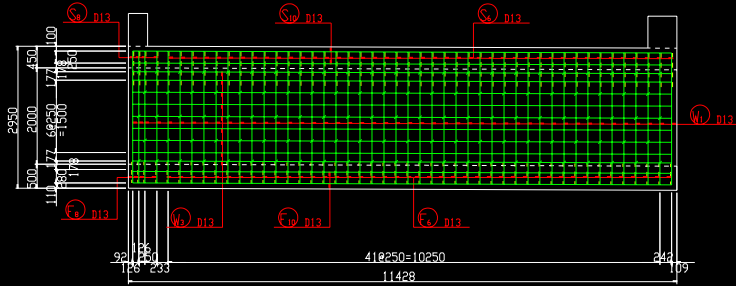


函渠工配筋图(3) s=1:50  
[ 箱体部 ]

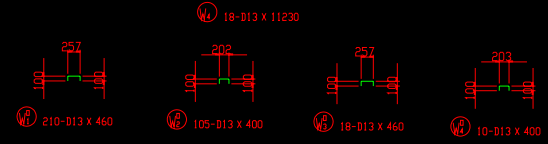
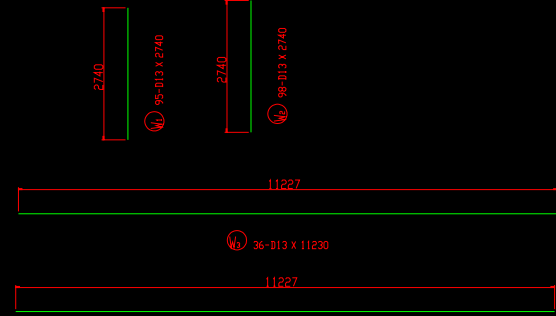
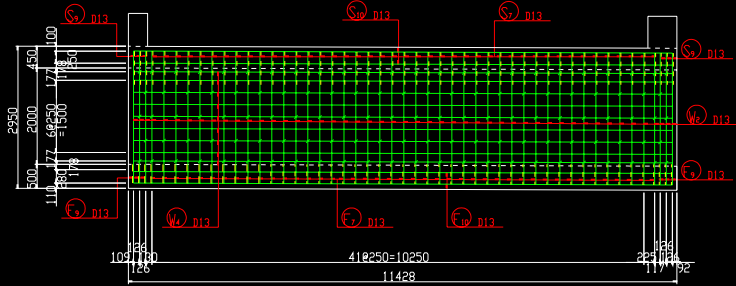
側壁外面  
(7-7)



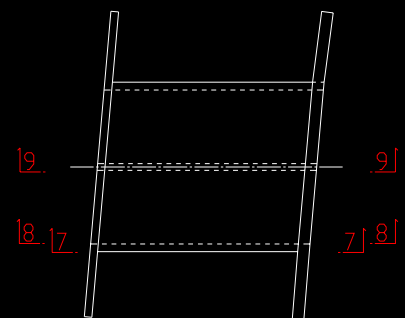
側壁内面  
(8-8)



隔壁  
(9-9)



位置図



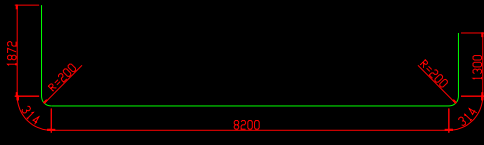
函渠工配筋図(4) s=1:50  
〔躯体部〕



① S1 43-D22 X 12000



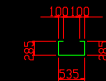
② S2 43-D22 X 8600



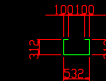
① E1 43-D19 X 12000



② E2 43-D19 X 8600



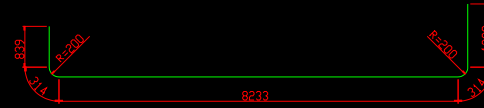
① E3 174-D13 X 1310



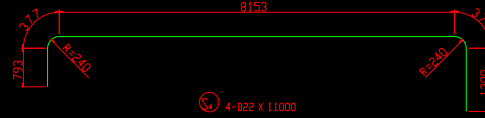
② E4 174-D13 X 1360



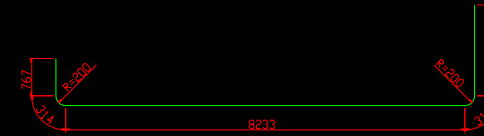
① S3 4-D22 X 11500



① E5 4-D19 X 11000



① S4 4-D22 X 11000



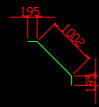
① E6 4-D19 X 11500



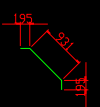
① S5 8-D22 X 8630



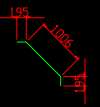
① E7 8-D19 X 8630



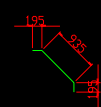
① S6 86-D13 X 1390



① S7 86-D13 X 1320



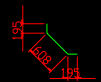
① S8 10-D13 X 1400



① S9 12-D13 X 1330



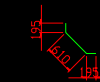
① E8 86-D13 X 1070



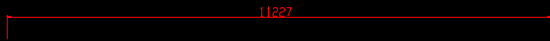
① E9 86-D13 X 1000



① E10 10-D13 X 1070



① E11 12-D13 X 1000



① S10 76-D13 X 11230



① E12 76-D13 X 11230

鉄筋質量表

種別	径	長さ (mm)	本数	単位質量 (kg/m)	一本当り質量 (kg/本)	質量 (kg)	補遺
F1	D19	12000	43	2.25	27.00	1161	⌈
F2	D19	8600	43	2.25	19.95	832	⌈
F3	D19	11000	4	2.25	24.75	99	⌈
F4	D19	11500	4	2.25	25.88	104	⌈
F5	D19	8630	8	2.25	19.42	155	⌈
F6	D13	1070	86	0.995	1.06	91	⌈
F7	D13	1000	86	0.995	1.00	86	⌈
F8	D13	1070	10	0.995	1.06	11	⌈
F9	D13	1000	12	0.995	1.00	12	⌈
F10	D13	11230	76	0.995	11.17	849	⌈
						3400	

F9	D13	1360	174	0.995	1.35	235	⌈
						235	

S1	D22	12000	43	3.04	36.48	1569	⌈
S2	D22	8600	43	3.04	26.14	1124	⌈
S3	D22	11000	4	3.04	34.96	140	⌈
S4	D22	11000	4	3.04	33.44	134	⌈
S5	D22	8630	8	3.04	26.24	210	⌈
S6	D13	1390	86	0.995	1.38	119	⌈
S7	D13	1320	86	0.995	1.31	113	⌈
S8	D13	1400	10	0.995	1.35	14	⌈
S9	D13	1330	12	0.995	1.32	16	⌈
S10	D13	11230	76	0.995	11.17	849	⌈
						4288	

S9	D13	1310	174	0.995	1.30	226	⌈
						226	

W1	D13	2740	95	0.995	2.73	259	⌈
W2	D13	2740	98	0.995	2.73	268	⌈
W3	D13	11230	36	0.995	11.17	402	⌈
W4	D13	11230	18	0.995	11.17	201	⌈
						1130	

Y5	D13	460	210	0.995	0.46	97	⌈
Y6	D13	400	105	0.995	0.40	42	⌈
Y7	D13	460	18	0.995	0.46	8	⌈
Y8	D13	400	10	0.995	0.40	4	⌈
						151	

合 計		D22	3177 kg				
		D19	2351 kg				
		D13	3902 kg				
総質量			9430 kg		S3345		